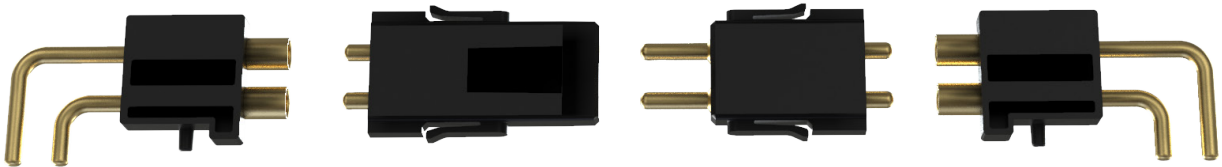


iNFINITY C o n n e c t o r

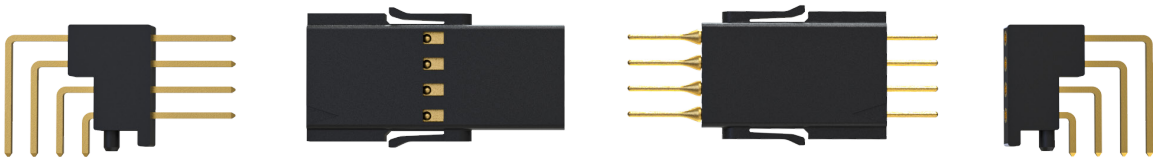
AN INFINITE NUMBER OF CONNECTIONS WITH SIM CONNECTORS



- Multi-piece design with pass-thru insert to preserve PCB connection
- Available in VTAC, QuadraPaddle, & Micro Power
- SIM Module allows for Mixed I/O
- Controlled float design for easier engagement & disengagement



Micro Power SIM Inserts



QuadraPaddle SIM Inserts



VTAC HSD Right Angle SIM Inserts

iNFINITY Connector

VPC 34-position
SIM ITA Module



VTAC Pass-Thru
Inserts



VTAC Right Angle Inserts
Mounted to PCB



Specifications

	VTAC	QuadraPaddle	Micro Power
Operating Voltage & Current	3 amps max continuous (350V max)	5 amps max continuous (600V max)	21 amps continuous
Contact Resistance	30 mOhms max/ mated contact	25 mOhms max	1.5 mOhms max
Insulation Resistance	1000 MOhms min	5000 MOhms min	—————
Dielectric Withstanding	1050 VDC min	1500 VDC min	1050 VDC min
Mating Force	0.6 lb (2729 g) per insert	.24 lbs (109 g)	1.23 lbs (558 g)
Contact Plating	50µ" Au over 100µ" Ni	30µ" Au over 100µ" Ni	30µ" Au over 100µ" Ni
Data Rate	10+Gpbs/ differential pair (right angle)		
Crosstalk	-30 dB min		
Impedance	100+/- 10 Ohms/ differential pair		
Insert Material	Outer Shell- Blue or Black LCP Male Contact- Alloy 7025		