

► **NATIONAL INSTRUMENTS™ PXI-2532 Solution**

VPC's innovative PCB Adapter solution for the National Instruments PXI-2532 High-Density Multiconfiguration Matrix enables rapid interconnection between the switch module and device(s) under test.

With four 34-pin and two 16-pin connectors, the Virginia Panel adapter board allows quick integration with National Instruments' TB-2640 series terminal blocks, regardless of matrix configuration. (Terminal blocks available from National Instruments.)



PART # 510 150 141

► **Features and Benefits**

- Enables rapid integration with NI Terminal Blocks
- Supports any matrix configuration
- Uses commercially available ribbon cable
- Reduces wiring requirements
- Enables quick changeover of devices under test



VPC PCB ADAPTER SOLUTION
PART # 510 150 141

ORDERING INFORMATION

VPC.COM

540.932.3300

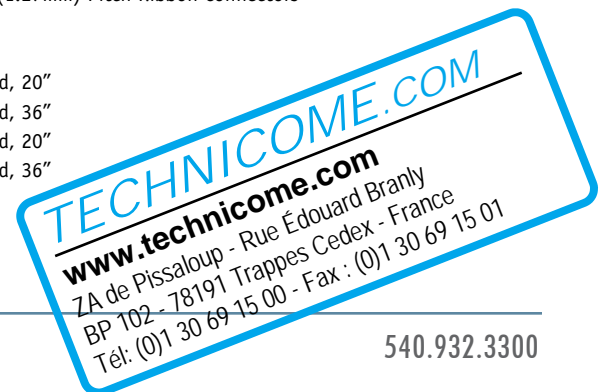
PART #	DESCRIPTION
--------	-------------

NATIONAL INSTRUMENTS PXI-2532

510 150 141 192 Pin Receiver Module to PCB-Mounted 4x34 and 2x16 Pin Male .050" (1.27mm) Pitch Ribbon Connectors

CABLE ASSEMBLIES

515 109 143 Cable Assembly, 16 Pin .050" (1.27mm) Pitch Ribbon Cable, Double-ended, 20"
 515 109 144 Cable Assembly, 16 Pin .050" (1.27mm) Pitch Ribbon Cable, Double-ended, 36"
 515 109 145 Cable Assembly, 34 Pin .050" (1.27mm) Pitch Ribbon Cable, Double-ended, 20"
 515 109 146 Cable Assembly, 34 Pin .050" (1.27mm) Pitch Ribbon Cable, Double-ended, 36"





SPECIFICATIONS

NUMBER OF CONTACTS	168
CURRENT/OPERATING VOLTAGE	0.5 Amps Continuous @ 150 V Rms
BOARD MATERIAL	Fr/4 With Soldermask
PCB ADAPTER CONNECTIONS	Four 34 Pin .050" (1.27mm) Male Ribbon Two 16 Pin .050" (1.27mm) Male Ribbon

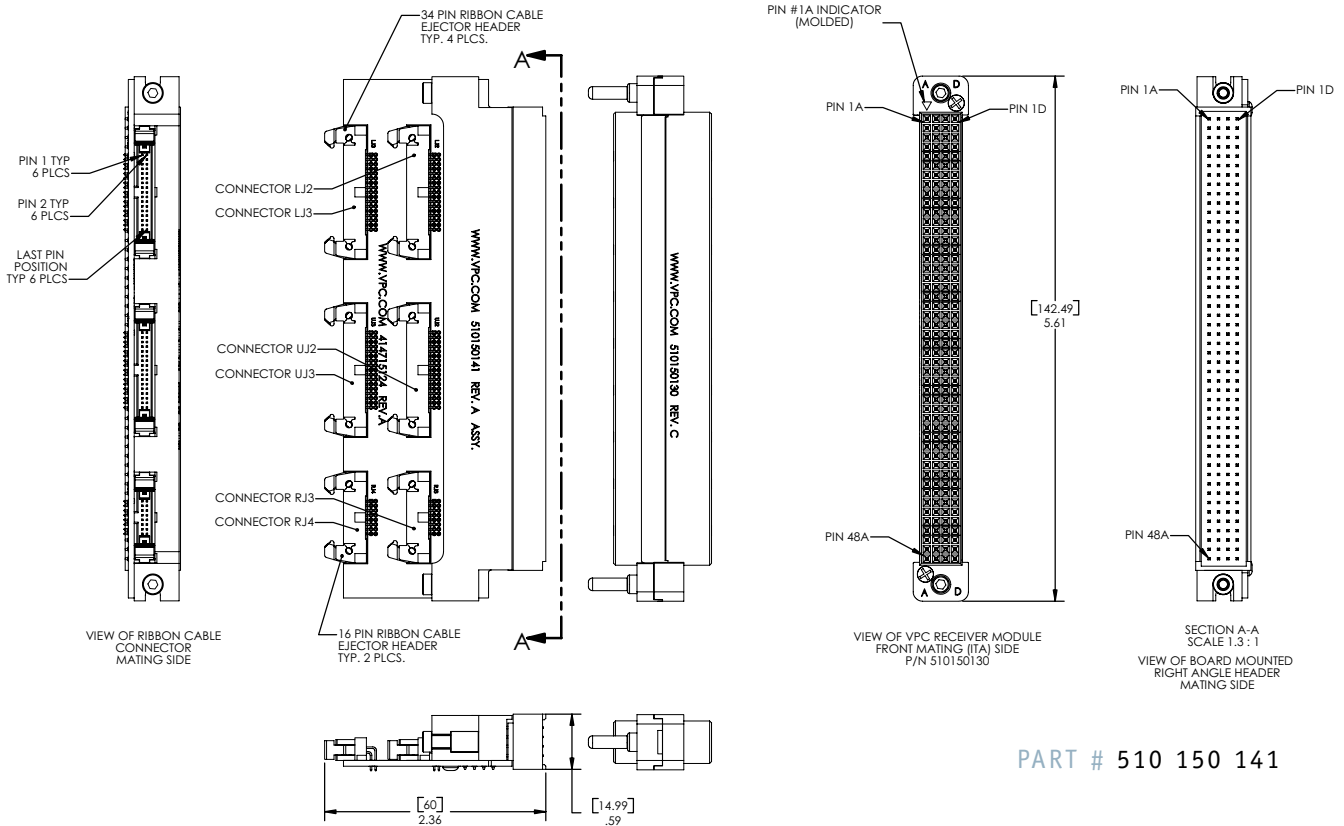
► NATIONAL INSTRUMENTS™ Terminal Blocks

- NI TB-2640 4x128 Terminal Block
- NI TB-2641 8x64 Terminal Block
- NI TB-2643 4x64 Terminal Block
- NI TB-2644 8x32 Terminal Block

For more information on the NI PXI-2532 and accessories visit ni.com.



► Configuration Tools



PART # 510 150 141